



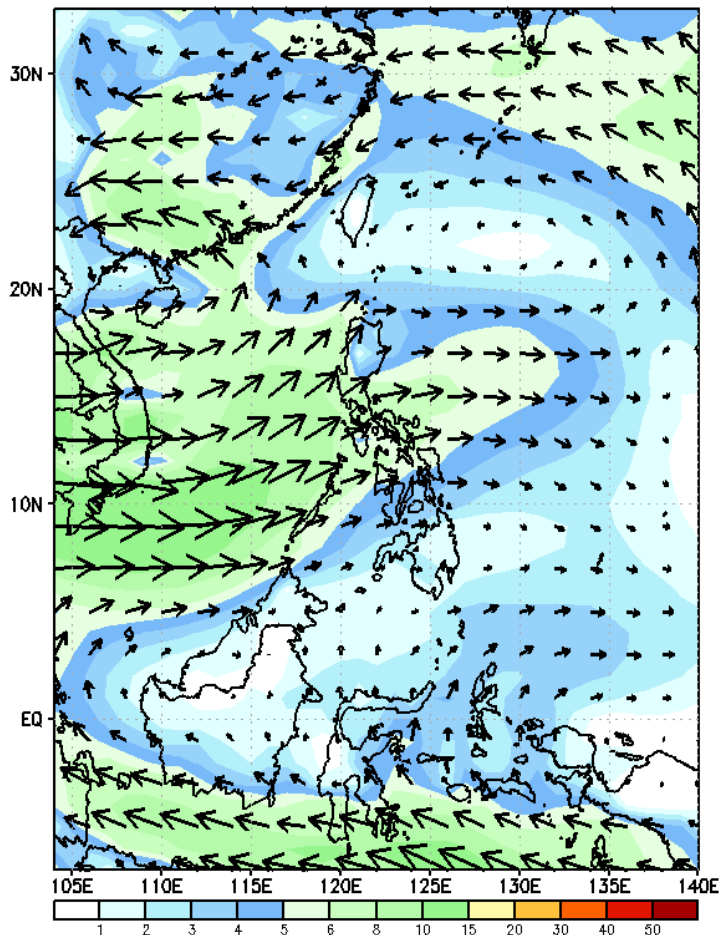
Week 1 & Week 2 Forecast for the Philippines using GEFS Model



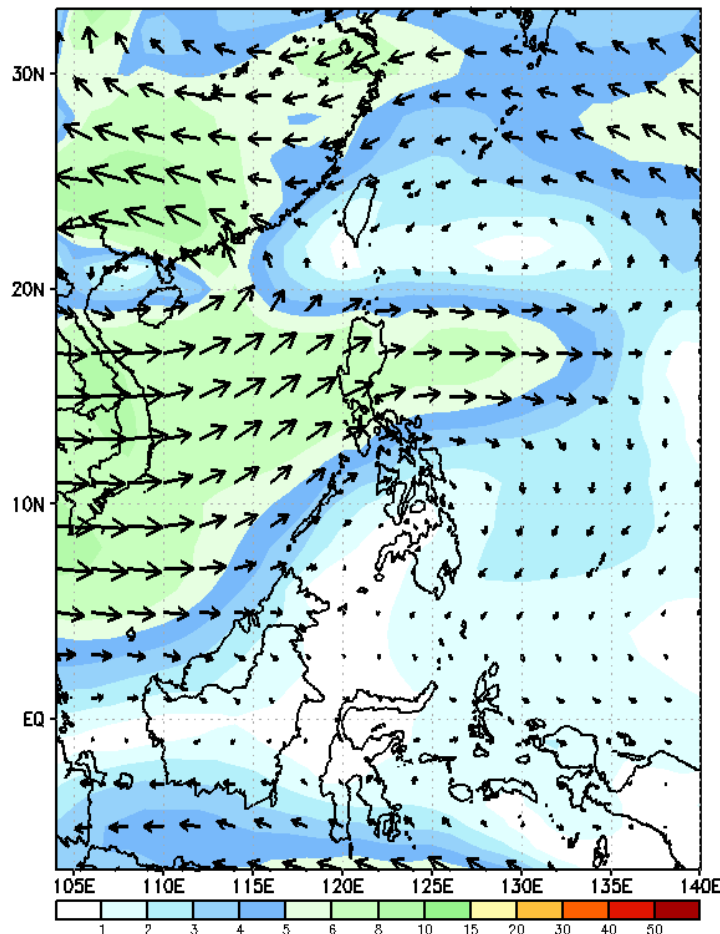
GEFS Week-1 Wind Forecasts:

Week 1: Sep 06-12, 2024

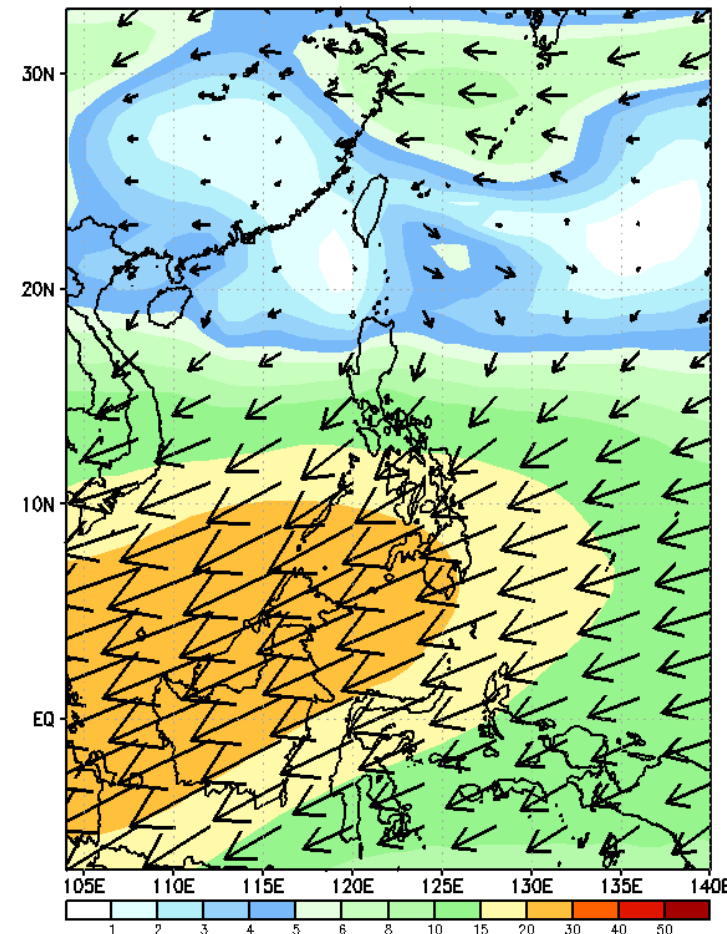
GEFS Week-1 850-hPa Wind Total
Valid: 20240906 - 20240912



GEFS Week-1 700-hPa Wind Total
Valid: 20240906 - 20240912

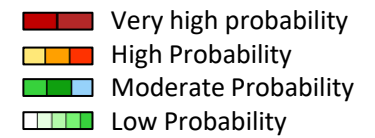


GEFS Week-1 200-hPa Wind Total
Valid: 20240906 - 20240912



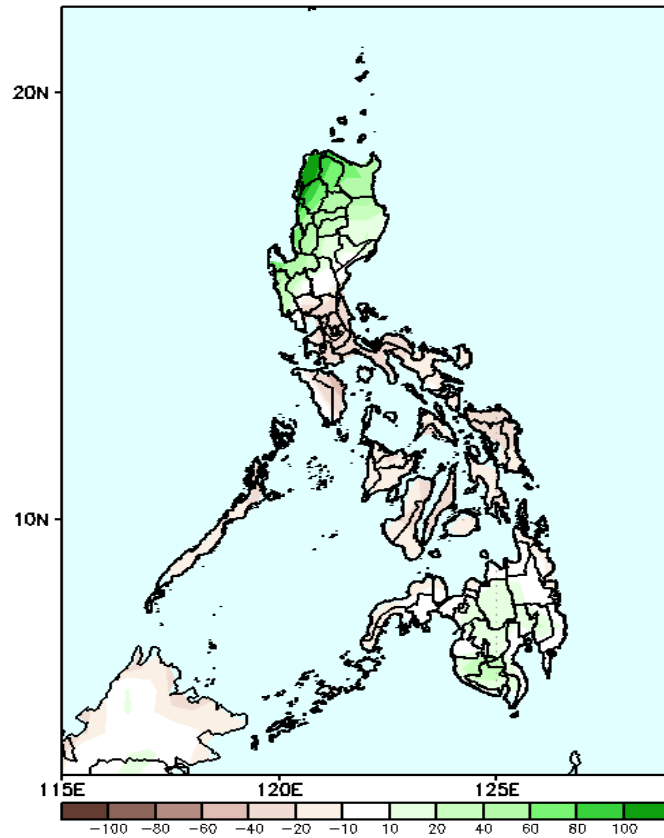
Southwest Monsoon affecting the affecting the western sections of Luzon and Visayas. Easterlies affecting the rest of the country.

Precipitation Anomaly and Exceedance Probability > 25/50 mm

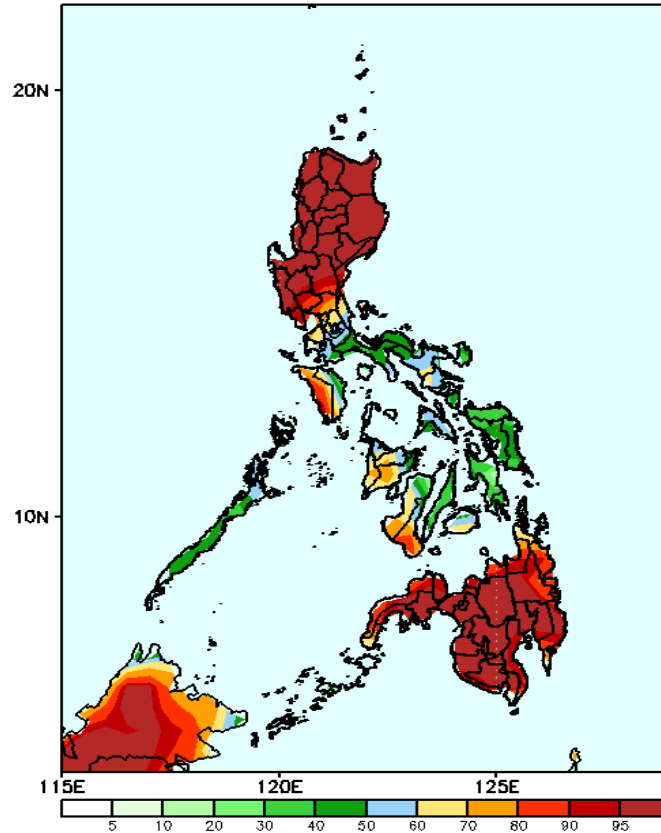


Week 1: Sep 06-12, 2024

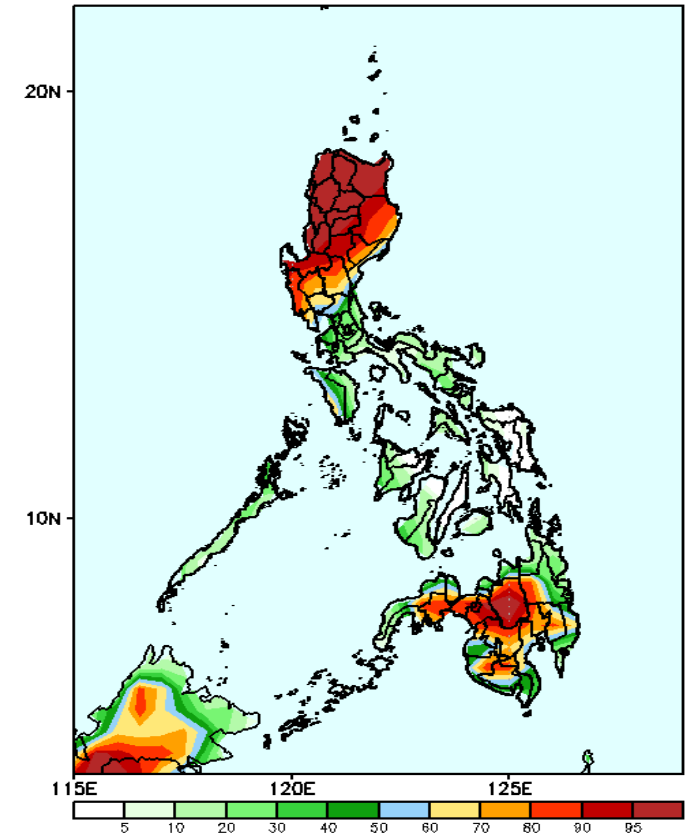
GEFS Week-1 Precip Anomaly
Valid: 20240906 - 20240912



GEFS Week-1 Exceedance Prob. > 25mm
Valid: 20240906 - 20240912



GEFS Week-1 Exceedance Prob. > 50mm
Valid: 20240906 - 20240912



Increase of rainfall of 20-100mm is likely in Northern and Central Luzon; 20-40mm in Bukidnon and southwestern Mindanao while 10-60mm rainfall deficit is expected over the rest of the country.

Probability to Exceed 25mm

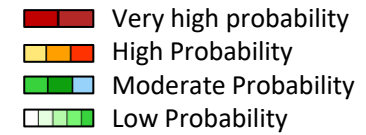
- High to very high over most of Northern and Central Luzon and Mindanao;
- Moderate to high over rest of Luzon and Visayas
-

Probability to Exceed 50mm

- High to very high over Northern Luzon;
- Moderate to high over Central Luzon, NCR, Occidental Mindoro and most parts of Mindanao;
- Low to moderate over the rest of the country.

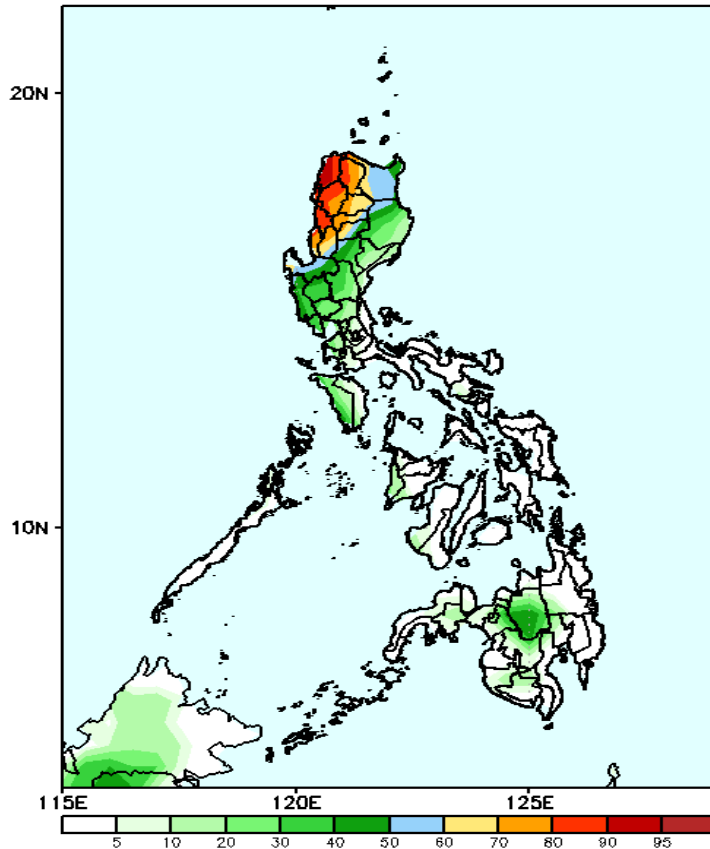


Exceedance Probability > 100/150/200 mm



Week 1: Sep 06-12, 2024

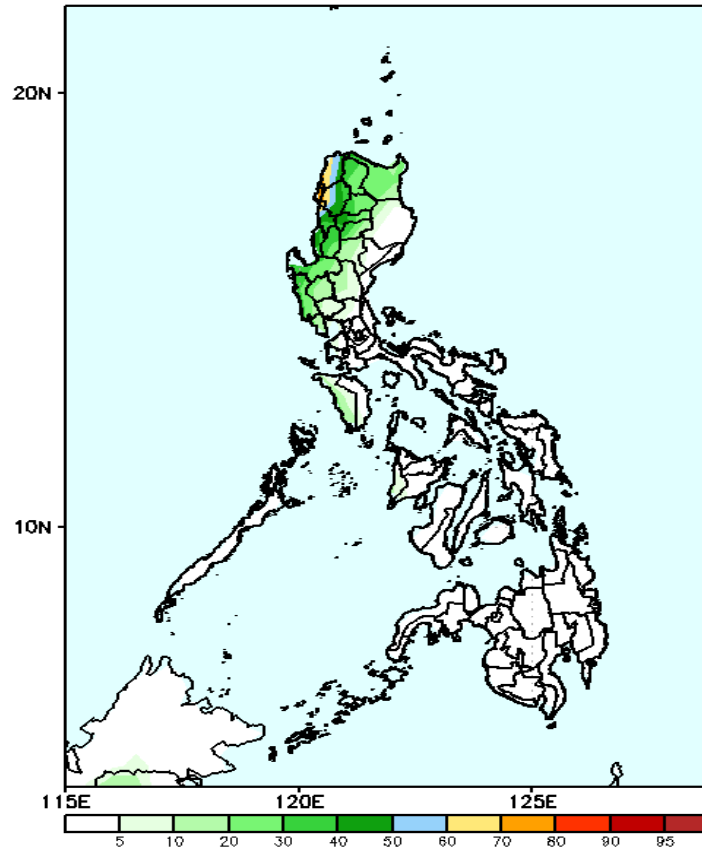
GEFS Week-1 Exceedance Prob. > 100mm
Valid: 20240906 - 20240912



Probability to Exceed 100mm

- High to very high over Ilocos Provinces;
- Moderate to high over the rest of Ilocos Region, CAR, Cagayan and Pangasinan;
- Moderate over the rest of Luzon and Bukidnon;
- Low over the rest of the country.

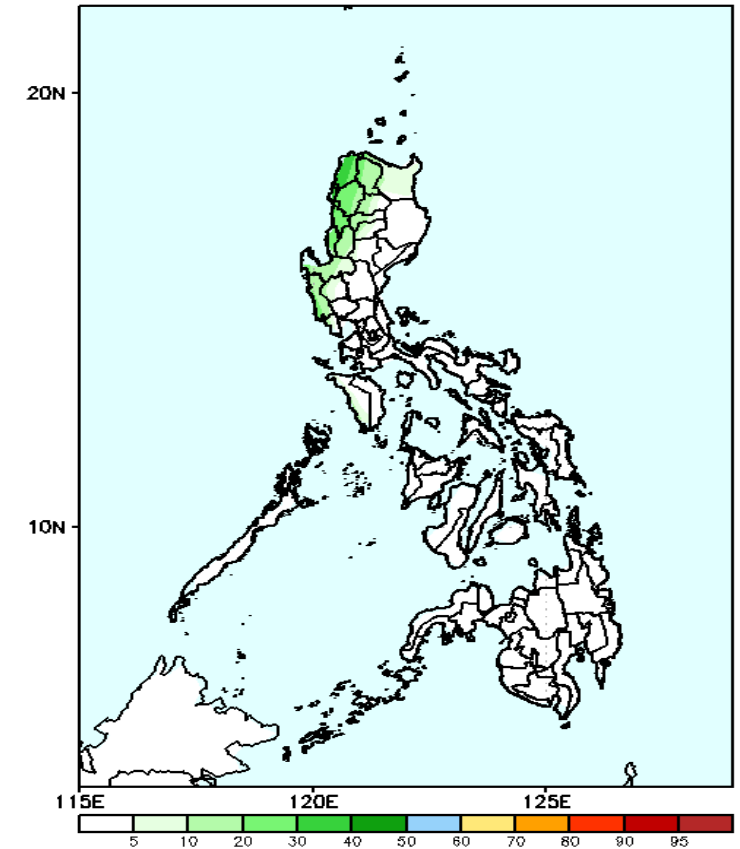
GEFS Week-1 Exceedance Prob. > 150mm
Valid: 20240906 - 20240912



Probability to Exceed 150mm

- Moderate to high over Ilocos Provinces and Abra;
- Low to moderate over the rest of Northern Luzon;
- Low over the rest of the country.

GEFS Week-1 Exceedance Prob. > 200mm
Valid: 20240906 - 20240912



Probability to Exceed 200mm

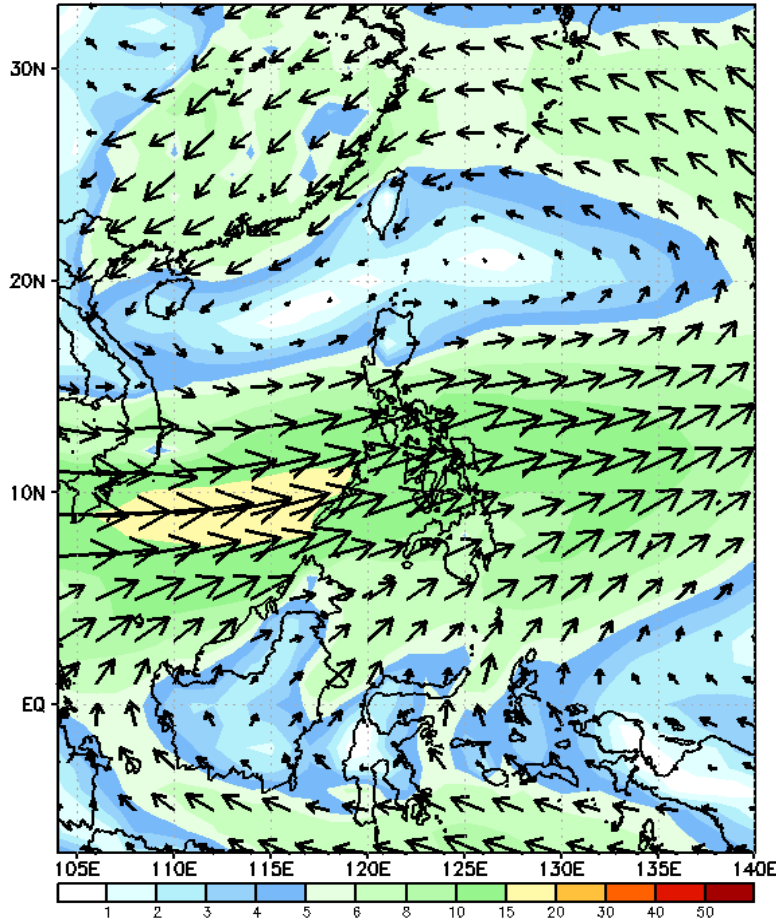
- Low across the country.



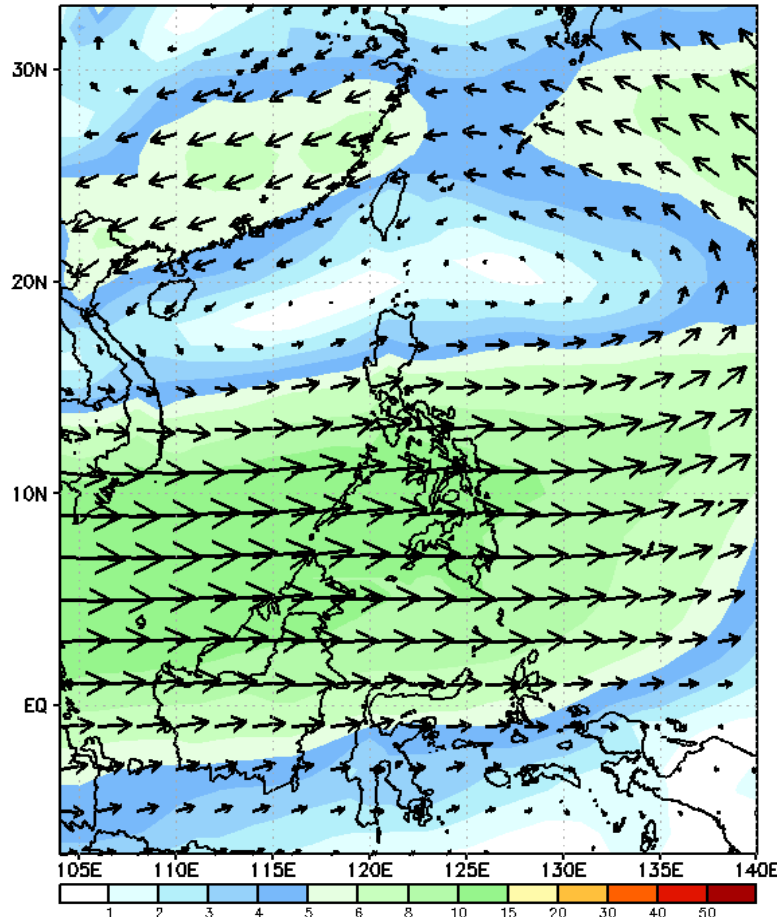
GEFS Week-2 Wind Forecasts:

Week 2: Sep 13-19, 2024

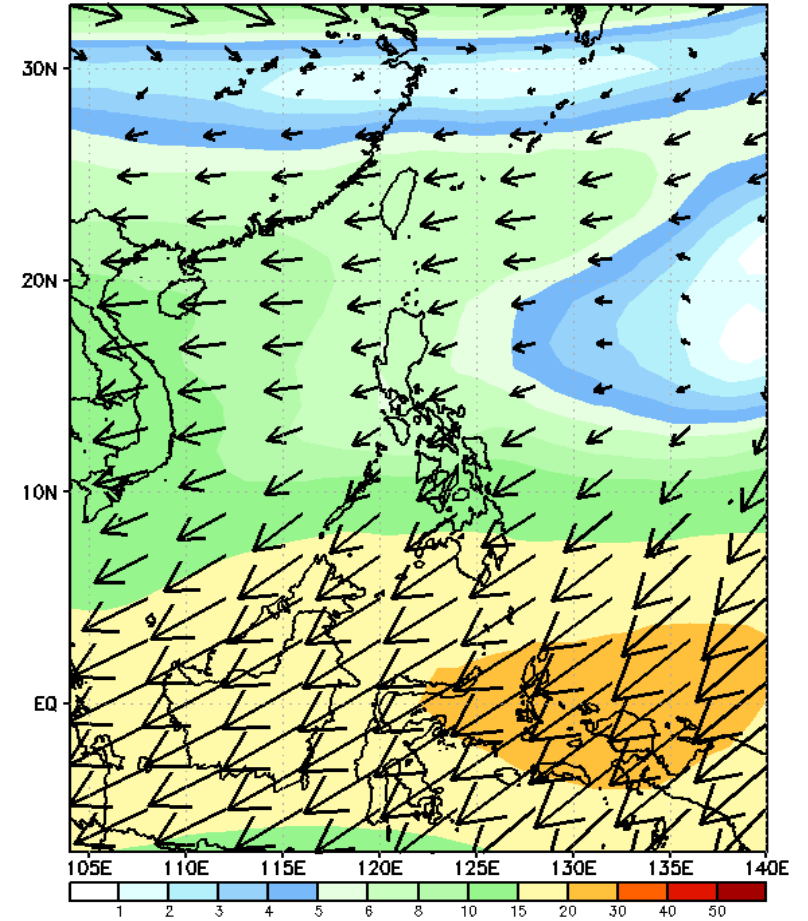
GEFS Week-2 850-hPa Wind Total
Valid: 20240913 - 20240919



GEFS Week-2 700-hPa Wind Total
Valid: 20240913 - 20240919

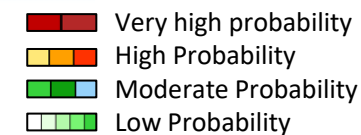


GEFS Week-2 200-hPa Wind Total
Valid: 20240913 - 20240919



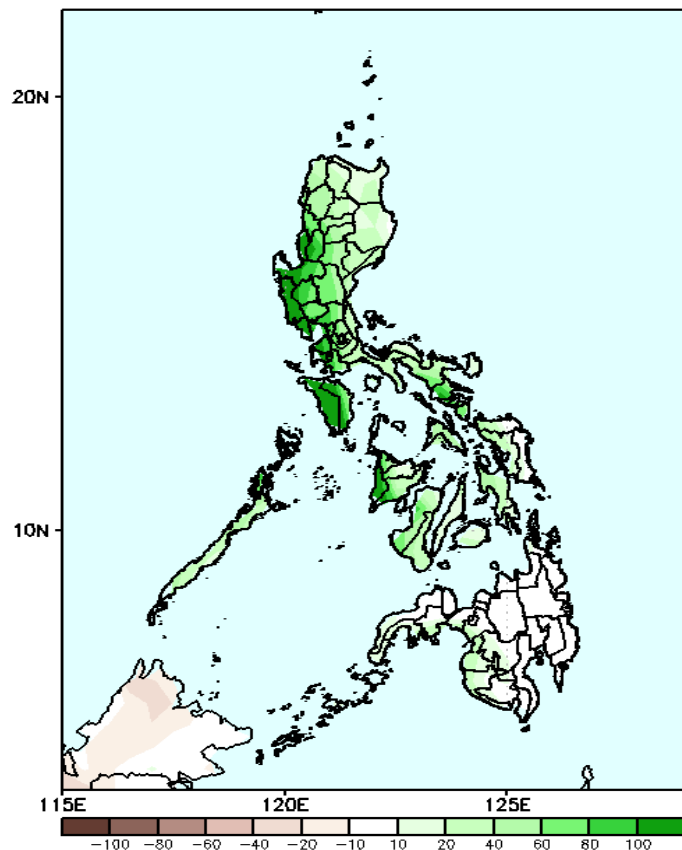
Southwest Monsoon affecting most parts of the country.

Precipitation Anomaly and Exceedance Probability > 25/50 mm



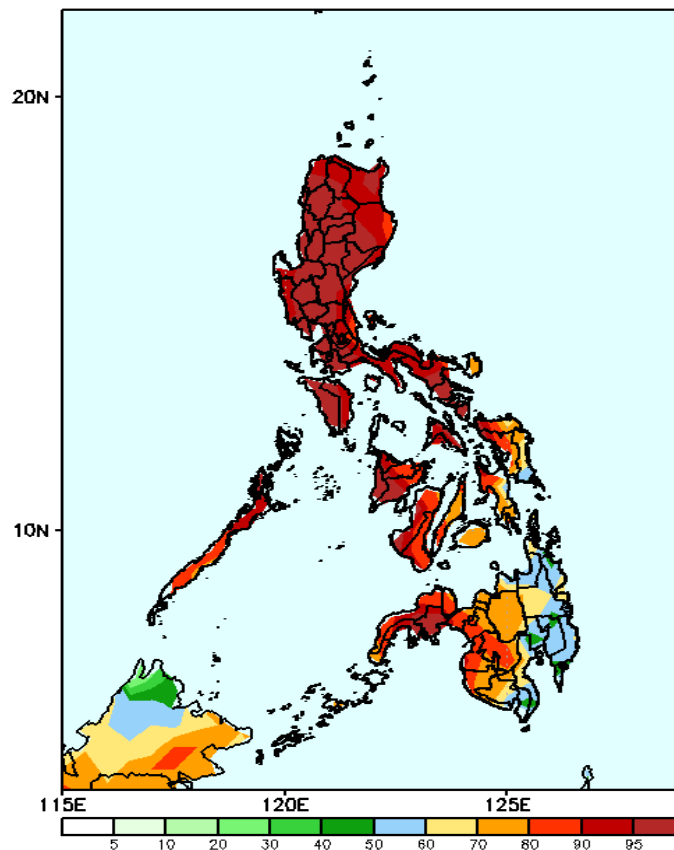
Week 2: Sep 13-19, 2024

GEFS Week-2 Precip Anomaly
Valid: 20240913 - 20240919



Increase of rainfall of 40-100mm in most parts of Luzon and Visayas; 10-20mm in western Mindanao.

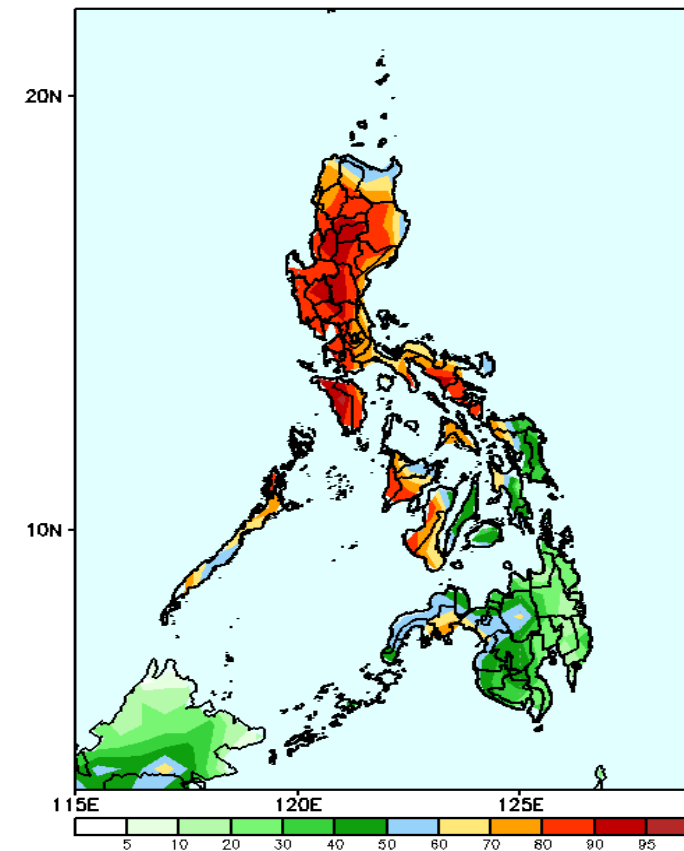
GEFS Week-2 Exceedance Prob. > 25mm
Valid: 20240913 - 20240919



Probability to Exceed 25mm

- High to very high over most parts of Luzon, Visayas and western Mindanao
- Moderate to high over the rest of the country

GEFS Week-2 Exceedance Prob. > 50mm
Valid: 20240913 - 20240919

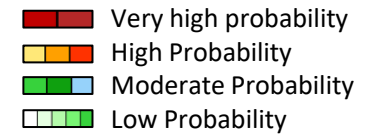


Probability to Exceed 50mm

- High to very high over CAR, Central and Southern Luzon, NCR and Antique;
- Moderate to high over the rest of Luzon, most of Visayas, Bukidnon, Lanao Provinces and Zamboanga Peninsula;
- Low to moderate over the rest of Mindanao.

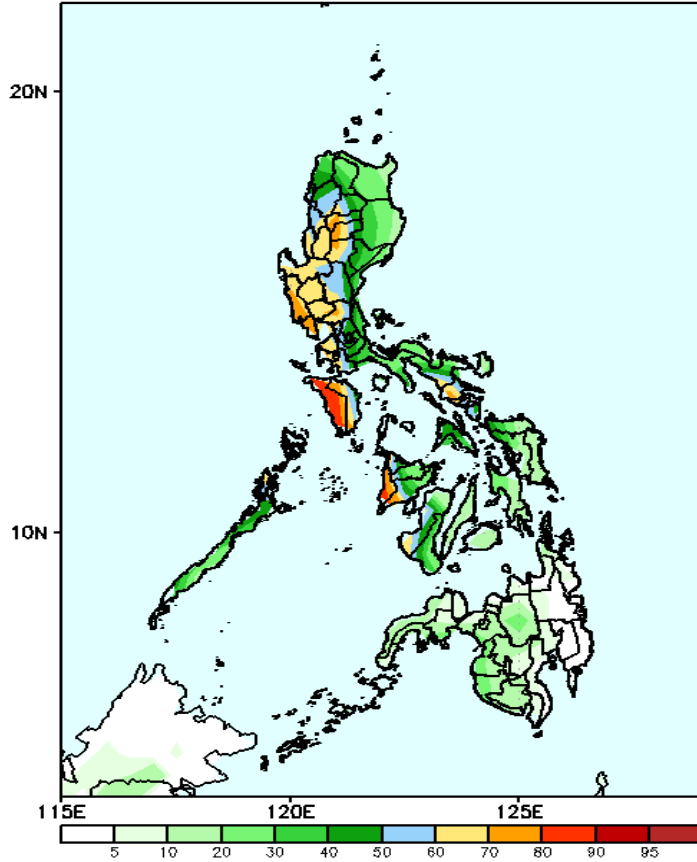


Exceedance Probability > 100/150/200 mm

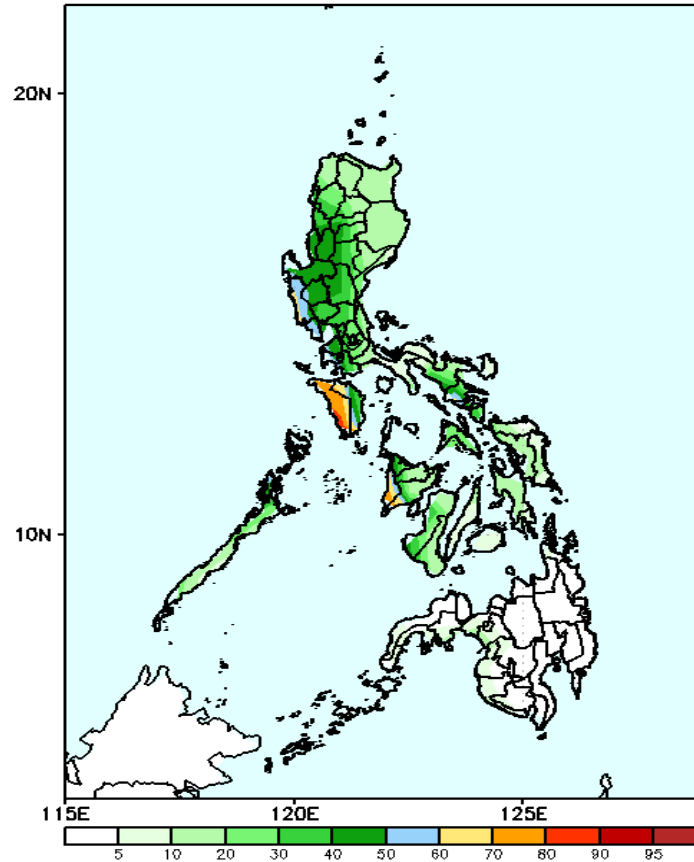


Week 2: Sep 13-19, 2024

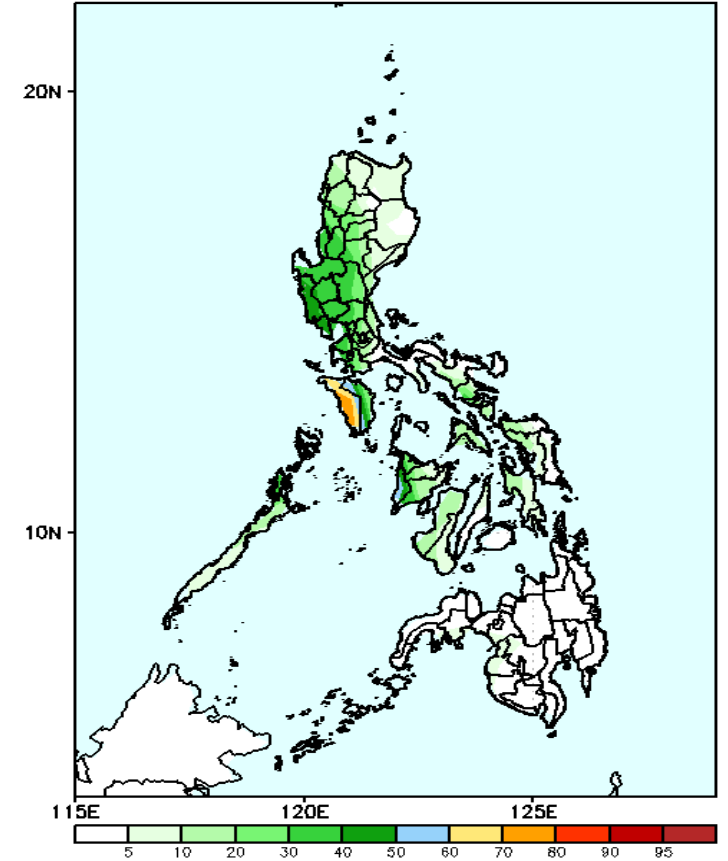
GEFS Week-2 Exceedance Prob. > 100mm
Valid: 20240913 - 20240919



GEFS Week-2 Exceedance Prob. > 150mm
Valid: 20240913 - 20240919



GEFS Week-2 Exceedance Prob. > 200mm
Valid: 20240913 - 20240919



Probability to Exceed 100mm

- Moderate to high over most of Western Luzon, southern part of CAR, Central Luzon, southern part of Camarines Sur, Albay, Antique, Guimaras, and western part of Iloilo and Negros Occidental, ;
- Low to moderate over the rest of the country.

Probability to Exceed 150mm

- Moderate to high over Pangasinan, Zambales, Bataan, La Union, western part of Batangas, Cavite, Mindoro provinces, Antique, Northern and the western part of Iloilo;
- Low to moderate over the rest of Luzon and Visayas;
- Low over Mindanao.

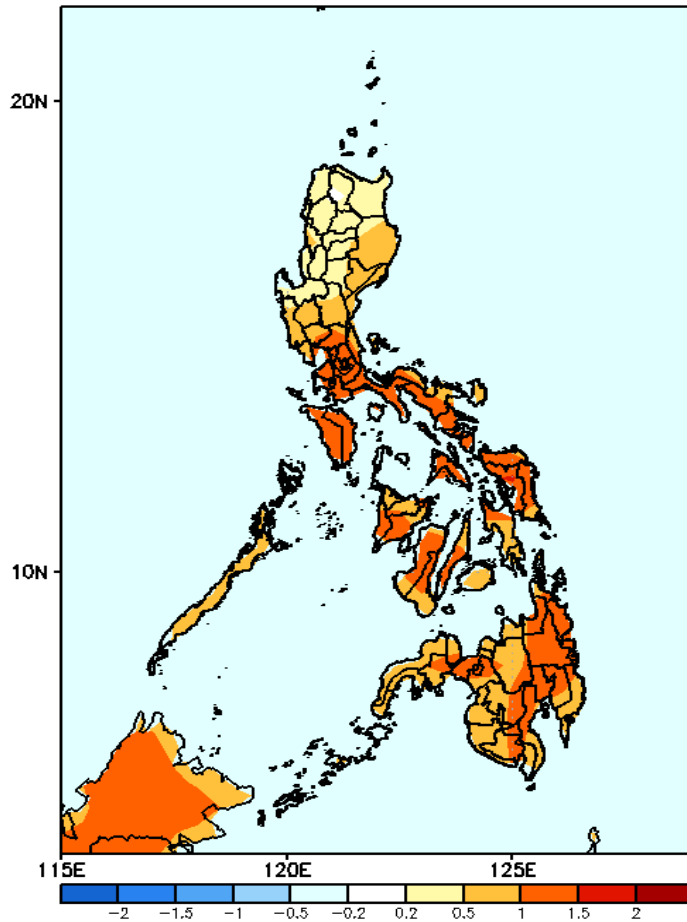
Probability to Exceed 200mm

- Moderate to high over Occidental Mindoro and Antique;
- Low to moderate over the rest of Luzon;
- Low over the rest of Visayas and Mindanao.



GEFS Week-1 & 2 Forecasts: T2m Anomaly

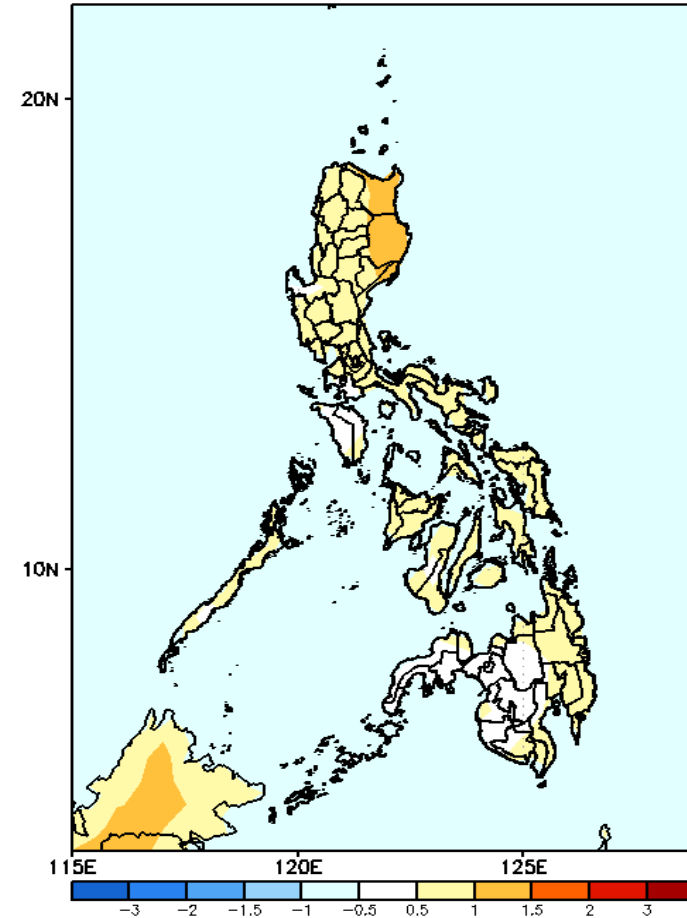
GEFS Week-1 T2m Anomaly
Valid: 20240906 - 20240912



2m Temperature Week 1: Sep 06-12, 2024

Near to warmer surface air temperature will likely be experienced in most parts of the country.

GEFS Week-2 T2m Anomaly
Valid: 20240913 - 20240919



2m Temperature Week 2: Sep 13-19, 2024

Near to slightly warmer surface air temperature will likely be experienced in most parts of the country.